

ABSOLUTE PUBLIC AUCTION

TRUCKS • DIESEL ENGINES • TRANSMISSIONS & PARTS

K&R TRUCK SALES

JULY 11, 2018 AT 9AM

HOLLAND, MI



**2015 CUMMINS ISX-15 CM2350 600 HP
CPL 3939 MILEAGE 116,796**



**1990 JCB 525B LOADALL TELESCOPIC 4X4 FORKLIFT
RUNS GREAT, NEEDS HYDRAULIC REPAIRS**



**2012 INTERNATIONAL 8600 NO ENGINE/TRANSMISSION
VIN#:1HSHXSJR7CJ593448 WIRED FOR MAXFORCE 13**



HENDRICKSON HA-460-55 AIR BAG 46,000-LB CAPACITY



**BERRYHILL
AUCTIONEERS**

AUCTIONEER: Wallace Ray "TC" Berryhill, License # 2808

(972) 874-1222

(972) 874-1444 FAX

email: raytopcat@aol.com

**Register at our Web Site to BID LIVE ON-LINE
www.BerryhillAuctioneers.com**



Grand Rapids
616-241-4656

Holland
616-392-8377

Kalamazoo
269-345-2183

Muskegon
231-733-2157

wmitrucks.com/kandrtrucksales.com



CUSTOMER APPRECIATION DAY

"Come meet the vendors that can make a difference in your trucking needs"



GOODYEAR



HENDRICKSON
"The World Rides On Us"

Continental
TIRE

FLEETRITE

JOIST



Shell
ROTELLA

BA BERRYHILL
AUCTIONEERS

Date: Wednesday, July 11, 2018

Time: Customer Appreciation Lunch from 11am - 1pm
Used Parts Auction starting at 9am

Location: K&R Truck, 840 Interchange Dr, Holland, MI 49423

- FREE Lunch -
- Door Prizes -
- Used Parts Auction -
- Give-Aways -
- Promotions -
- Virtual Reality -

ABSOLUTE PUB AUCTION

WWW.BERRYHILLAUCTIONEERS.COM

TRUCKS • DIESEL ENGINES • TRANSMISSIONS & PARTS •



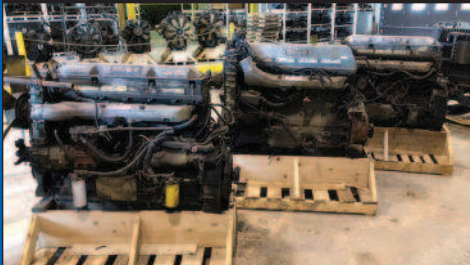
USED CATERPILLAR C7 ACERT SERIAL # FMM20774 HP 330 MILEAGE 21,451



USED 1994 CUMMINS N14 SELECT CPL 1573 MISSING ECM 430HP



DETROIT DIESEL DD-15 14.8 LITER 560HP SERIAL# 472903S0084251 MILEAGE 428,204 RUNS HAS A MISS & MAKES POPPING NOISE



SEVERAL DETROIT 60 SERIES TO CHOOSE FROM



SEVERAL BIG CAMS TO CHOOSE FROM



SEVERAL CATERPILLARS TO CHOOSE FROM



EATON FULLER TRANSMISSION RT0-16910B-DM2 MILEAGE 508,255 AND MODEL FRMF-15210B MILEAGE N/A



CORE EATON TRANSMISSION RTLOF15610B MILES:1027631 SERIAL # 5099362



REMAN ALLISON HT700 TRO-HD 0 SERIAL # 29500395 INTERNATIONAL PART # ETXHT750-29500395



1995 CHALMERS CUTOFF 4.10 RATIO



1996 CUTOFF DS451P 4.56 RATIO



1995 CUTOFF HENDRICKSON LIFT AXLES MODEL HLM-1-P-152



MERITOR 40K REAR AIR RIDE CUT OFF WITH MT-40-14X DIFFS WITH 3.36 RATIO MILEAGE: N/A



CUTOFF 2012 INTERNATIONAL PROSTAR MERITOR MT40-14X 3.36 RATIO 40,000LB



2015 KENWORTH T680 CUTOFF MODEL DSP40 AND RSP40 RATIO 3.36

BLIC ON



K&R TRUCK SALES

JULY 11, 2018 • 9:00 AM • HOLLAND, MI

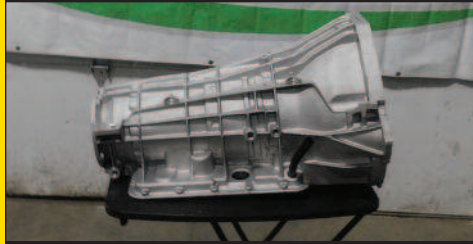
TRUCKS • DIESEL ENGINES • TRANSMISSIONS & PARTS



INTERNATIONAL MAXXFORCE 7 CORE 6.4 LITER TURNS 360
SERIAL # 6.4HM2Y 0747415 MILEAGE 216,403



SEE WEB SITE FOR DETAILS !!!



NEW TRANSMISSION CASE FITS : CF500 /CF600 4X2
LOW FRONT ENTRY TRUCK PART # 6051056C1



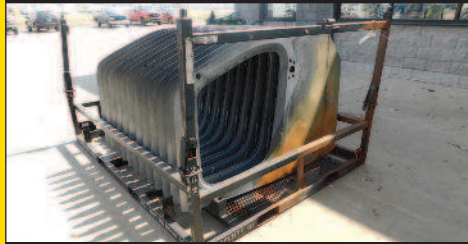
Heavy Spec Rear Cutoff Hendrickson with 3.55 ratio



1998 VOLVO VN CUTOFF EATON DS404 3.70 RATIO



2012 INTERNATIONAL 8600 VIN#:1HSHXSJR7CJ602083: WIRED
FOR MAXFORCE 13 NO-ENGINE/TRANSMISSION



FREIGHTLINER M2 RH DOOR SHELLS
PART NUMBER A18-64812-020



MISCELLANEOUS USED FLYWHEELS



REPAIRED SET OF MERITOR DIFFERENTIALS
RD20145/RR20145 RATIO : 2.64 MILEAGE: N/A



CUTOFF 2012 INTERNATIONAL PROSTAR MERITOR MT40-14X
3.36 RATIO MILEAGE: 485,365 40,000LB



BOX OF AIR DRIERS



BOX OF CORE ALTERNATORS



BOX OF CORE STARTERS



BOX OF MISCELLANEOUS SHIFTERS



CUTOFF 2000 STERLING VIN#:2FZNRJBB2YAA94095 MERITOR
6.43 RATIO WITH LOCKERS



NEW INTERNATIONAL LONESTAR CONVENTIONAL SEAT PASSENGER SIDE LEATHER PART # 3686475C91



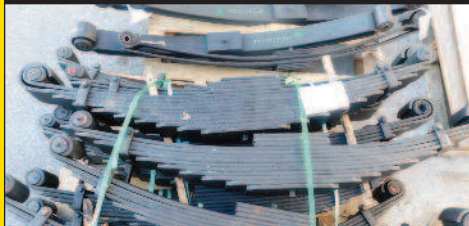
USED 24.5 ALUMINUM 10 LUG, BUDD WHEEL



NEW STEEL 16X7 8HOLE WHITE FORD WHEEL PART NUMBER A29576PW



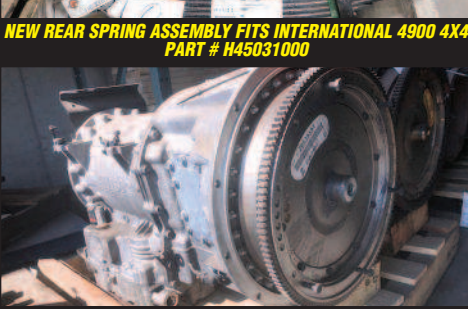
NEW REAR SPRING ASSEMBLY FITS INTERNATIONAL 4900 4X4 PART # H45031000



NEW FRONT CHASSIS SPRING FITS: INTERNATIONAL 5000 & 5600I SEVERE SERVICE CONVENTIONAL (BUILT ON 03/15/1996 & LATER) PART # 1606839C92



NEW 12K FRONT CHASSIS SPRING TAPER LEAF W/RUBBER BUSHING FITS: INTERNATIONAL 7600 SEVERE TRUCKS (BUILT ON 04/01/2002 & LATER) PART # 3712717C92



ALLISON 3000RDS 5 SPEED, OUT OF A 2015 TRUCK WITH ONLY 144 SERIAL NUMBER 6511243354



CRATE OF (14) HORTON FAN CLUTCHES CORES TO BE REBUILT



USED THIEMANN LIFT GATE MODEL TT16RM



USED PROTECH 3 COMPARTMENT ENCLOSURE HEADACHE RACK WITH LIGHTS 68 H X 14 D X 86 W



USED HEAVY DUTY BULKHEAD/HEADACHE RACK WITH LIGHTS



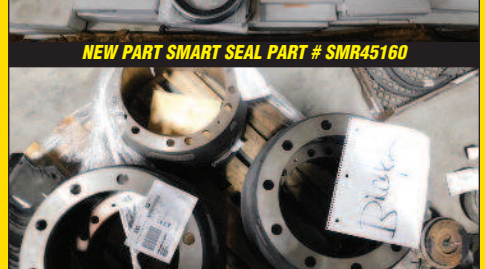
NEW PART SMART SEAL PART # SMR45160



NEW TIE ROD END, MERITOR STYLE, C-E 7.38 IN. C ZERK, RIGHT HAND INTERNATIONAL PART # FLT0073 MERITOR PART # A3144F448 EATON PART # 818471



MISCELLANEOUS USED CLUTCH CORES



NEW FRONT DRUM BRAKE 16 1/2" X 5" PART # W66350F / 2606967C1



NEW INTERNATIONAL PROSTAR LEFT HAND NON POLISHED FUEL TANK 100 GALLONS PART # 2611294C91



NEW ENGINE FAN BLADE FITS INTERNATIONAL CE 200/300 CONVENTIONAL INTEGRATED COMMERCIAL & SCHOOL BUS PART # 4053038C1



USED MISCELLANEOUS DRIVE SHAFTS

BA BERRYHILL AUCTIONEERS

VISIT OUR WEBSITE FOR A COMPLETE LIST OF ITEMS AT AUCTIONEER: Wallace Ray (T.C.) Berryhill License # 2808 www.BerryhillAuctioneers.com

AUCTION INFORMATION

BUYER'S PREMIUM: 5% in person at Auction or 10% for Proxy Absentee Bids and Live Online Placed Bids at: www.BerryhillAuctioneers.com

MORE INFORMATION: www.BerryhillAuctioneers.com or K&R Truck Sales (Auction Site)
Kyle Roelofs kyle@kandrtrucksales.com Phone: 616-392-8377 ext#:114
BERRYHILL AUCTIONEERS at 972-874-1222 or Fax: 972-874-1444

AUCTION SITE LOCATION: K&R Truck Sales (Auction Site) located at:
840 Interchange Drive Holland, MI 49423
K&R Truck Sales at Exit 49 off Interstate 196, 35 miles from Grand Rapids Airport (GRR)

INSPECTION DATES: Starts on Monday, July 9, 2018 - 8:00am-5:00pm
Monday through Friday. Auction day: Gates Open at 7:00 AM

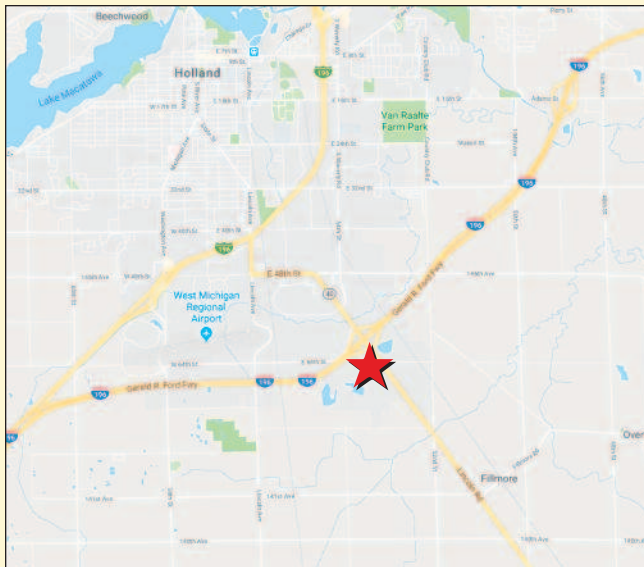
HOTELS: Several Hotels in the area: Doubletree (616) 394-0111; Residence Inn (616) 393-6900; Holiday Inn Express (616) 738-2800; Microtel Inn (616) 392-3235; Days Inn (616) 392-7001 – We suggest using www.Priceline.com to find the best hotel for your budget.

TERMS & CONDITIONS: Registration is FREE for new customers. When you are the winning bidder, you must pay in full or place a 20% deposit before the auction. If the item has to be resold because you did not pay in full or make a 20% deposit, you will be charged a 10% commission and any difference in the previous price sold. Past customers that are on credit watch, will have to deposit \$10,000 cash or cashier's check (payable to Berryhill Auctioneers) to obtain a Buyer's Guide and Bidder's Number. Complete payment in full on sale day by cash or cashier's check. All checks must be made payable to BERRYHILL AUCTIONEERS. We accept your Personal or Company check, but it must be accompanied by a bank letter of introduction, letter of credit or letter of guarantee.

NO WARRANTY: Everything in the Auction is being sold AS IS, WHERE IS, without warranty or guarantee of any kind, as to age, year of manufacture, model, condition, make or any statement by seller or auctioneer. Buyer is to inspect and purchase base on his/hers own knowledge of any item offered at this auction. Buyer is the expert and is purchasing a lot number only!

NOTE: Auction will be conducted RAIN OR SHINE. Make your inspection and place bids at the auction truck. All bidding is inside via television.

AUCTIONEER: Wallace Ray "TC" Berryhill, License # 2808



UPCOMING 2018 AUCTIONS! MARK YOUR CALENDAR!



**LKQ GEIGER TRUCK PARTS
WATSEKA, IL
AUGUST 8, 2018**



**DALE'S TRUCK PARTS
NEW PARIS, OH
OCTOBER 24 & 25, 2018**

ABSOLUTE PUBLIC AUCTION

TRUCKS • DIESEL ENGINES • TRANSMISSIONS & PARTS

K&R TRUCK SALES

JULY 11, 2018 AT 9AM

HOLLAND, MI



**USED CAB & HOOD CUT OFF 2012 INTERNATIONAL PROSTAR PLUS DAY CAB
WIRED FOR MAXXFORCE ENGINE 03/18/2011 VIN # 3HSDSHRXCN565917**

BA BERRYHILL AUCTIONEERS

www.BerryhillAuctioneers.com

BERRYHILL AUCTIONEERS

5531 Legacy Trail

Douglasville, Georgia 30135-5852

RETURNED SERVICE REQUESTED

